



## N300 PoE Access Point

TEW-755AP (v1.0R)

- WiFi N300 PoE access point
- Access Point, Client, WDS AP, WDS Bridge, WDS Station, and Repeater modes
- Included software utility aides WiFi network management
- Gigabit PoE LAN port
- Off-white low profile housing blends into the environment
- Mounting plate

TRENDnet's high performance N300 PoE Access Point, model TEW-755AP, supports Access Point (AP), Client, Wireless Distribution System (WDS) AP, WDS Bridge, WDS Station, and Repeater modes. It generates a 300 Mbps WiFi N network and features a Gigabit PoE port. The included Windows-based software utility manages multiple TEW-755APs and reduces WiFi management/troubleshooting time. A low profile housing blends into most environments and a mounting plate eases installation.



### Access Point Flexibility

Proven 300 Mbps WiFi N combined with AP, Client, WDS, and Repeater modes support multiple applications.



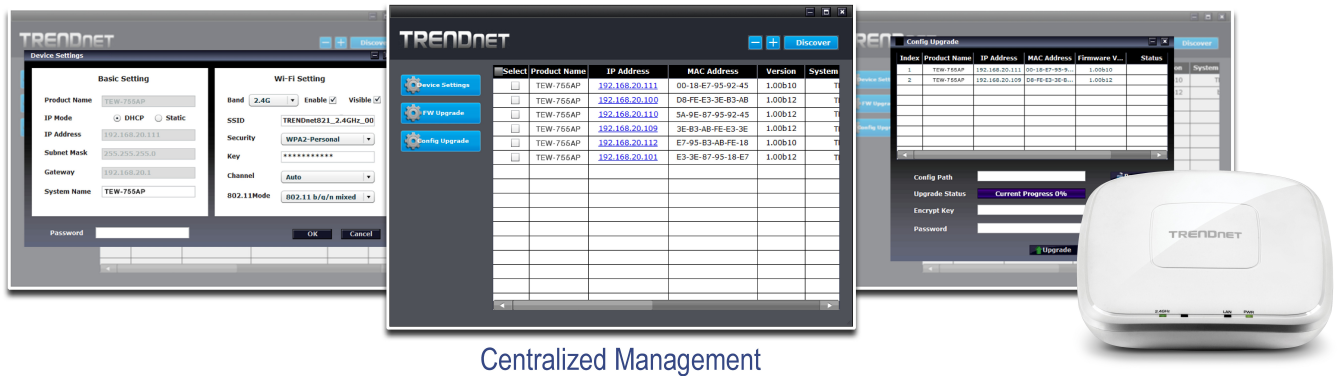
### Centralized Management

The included Windows based software utility manages multiple TEW-755APs and reduces WiFi management and troubleshooting time.



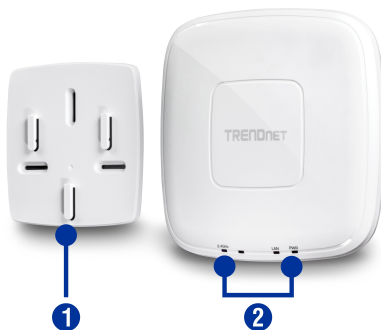
### Easy Installation

Saves remote location installation time and costs with Gigabit Power over Ethernet (PoE) support and a convenient mounting plate.



Centralized Management

## Networking Solution



- 1 Mounting plate
- 2 LED indicators (can be turned off)



- 3 Gigabit PoE LAN port
- 4 Optional power port for non-PoE installations

- 5 Reset button
- 6 Low profile off white housing





### Multi-Language

Multi-Language Interface: English, Spanish, French, German, and Russian



### Power over Ethernet (PoE)

Saves remote location installation time and costs with Gigabit PoE support (Optional power port for non-PoE installations)



### WiFi N300

Low profile access point delivers proven WiFi N300



### Multi-Mode Support

Supports Access Point (AP), Client, WDS AP, WDS Bridge, WDS Station, and Repeater modes



### AP Utility

The included Windows-based utility reduces WiFi configuration and setup time



### Gigabit Port

Gigabit PoE LAN port maintains high performance connections to the wired network



### Wireless Coverage

Extended wireless coverage with MIMO antenna technology



### Encrypted Wireless

Support for wireless encryption of up to WPA2



### WiFi Traffic Shaping

Manage traffic allocation per VLAN



### Multiple SSIDs

Create up to 8 SSIDs



### IPv6

IPv6 network support



### Low Profile

Off white low profile housing blends into most environments



### LED Control

Further reduce product visibility by turning off LED indicators



### Mounting Plate

Mounting plate reduces installation time

## Specifications

### Standards

- IEEE 802.1Q
- IEEE 802.3
- IEEE 802.3u
- IEEE 802.3x
- IEEE 802.3ab
- IEEE 802.3af
- IEEE 802.11b
- IEEE 802.11g
- IEEE 802.11n (up to 300 Mbps)

### Hardware Interface

- 1 x PoE Gigabit LAN port
- Power port (optional non-PoE installation)
- Reset button
- LED indicators
- Mounting plate

### Special Features

- IP30 rated housing (with mounting plate installed)
- WiFi traffic shaping
- 802.1Q VLAN assignment per SSID
- IPv6 support (Link-Local, Static IPv6, Auto-Configuration (SLAAC/DHCPv6))
- Multi-Language interface, English, French, Spanish, German, Russian
- LEDs on/off
- Captive Portal (External Coovachilli server authentication)
- Internal Captive Portal (Local user account authentication and customizable portal page)
- 802.11k roaming assistance support
- RSSI Scanner (Client signal strength and tolerance)
- Airtime Fairness

### Operation Modes

- Access Point
- Client

- WDS AP
- WDS Bridge
- WDS Station
- Repeater

### Management/Monitoring

- Web-based management
- Software utility
- SNMP v1/v3
- STP
- Event logging
- Ping test
- Traceroute
- CLI

### Utility OS Compatibility

- Windows® 10, 8.1, 8, 7, Vista, XP

### Access Control

- Wireless encryption: WEP, WPA/WPA2-PSK, WPA/WPA2-RADIUS
- MAC filter
- Maximum client limit

### QoS

- WMM
- Traffic shaping per SSID

### SSID

- Up to 8 SSIDs

### Frequency

- 2.4 GHz: 2.412 – 2.472 GHz

### Wireless Channels

- 2.4 GHz: FCC: 1-11, ETSI: 1 – 13

### Modulation

- DBPSK/DQPSK/CCK for DSSS technique
- BPSK/QPSK/16-QAM/64-QAM for OFDM technique

### Antenna Gain

- 2.4 GHz: 2 x 4 dBi

### Wireless Output Power/Receiving Sensitivity

- 802.11b: FCC: 23 dBm (Max.), CE: 10 dBm (Max.) / -83 dBm (typical) @ 11 Mbps
- 802.11g: 19 dBm (Max.), CE: 12 dBm (Max.) / -65 dBm (typical) @ 54 Mbps
- 802.11n: FCC: 19 dBm (Max.), CE: 12 dBm (Max.) / -64 dBm (typical) @ 300 Mbps

### Power

- 12 V / 1 A consumption: 9.6 Watts Max.

### Operating Temperature

- 0 – 40 °C (32 – 104 °F)

### Operating Humidity

- Max. 95 % non-condensing

### Certifications

- CE
- FCC

### Dimensions

- 187 x 187 x 46 mm (7.3 x 7.3 x 1.8 in.)

### Weight

- 402 g (14.2 oz.)

### Warranty

- 3 year limited

### Package Contents

- TEW-755AP
- 5 ft. (1.5 m) network cable
- CD-ROM (Utility and User's Guide)
- Quick Installation Guide
- Power adapter (12 V DC, 1 A)
- Mounting Plate

\*Maximum wireless signal rates are referenced from IEEE 802.11 theoretical specifications. Actual data throughput and coverage will vary depending on interference, network traffic, building materials and other conditions. For maximum performance of up to 300 Mbps, use with a 300 Mbps 802.11n wireless adapter.

