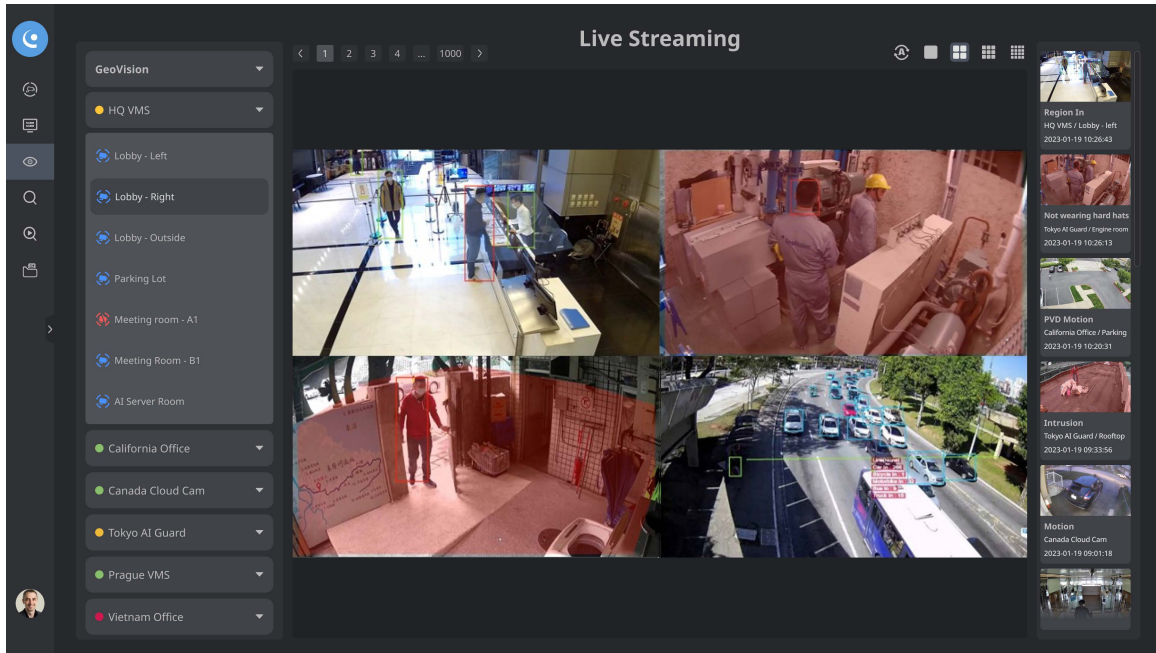


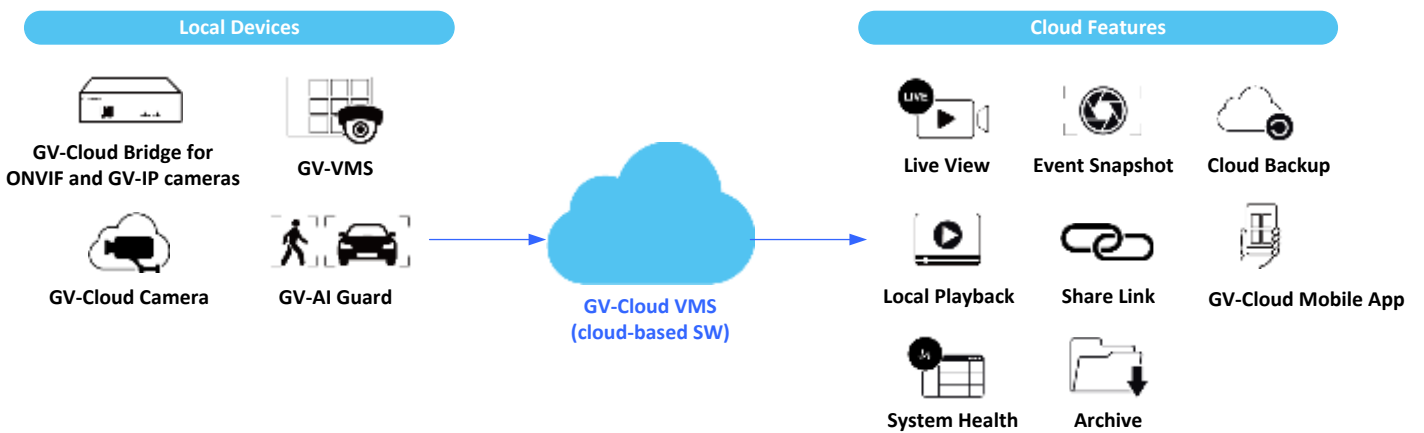
# GV-Cloud VMS



## Introduction

GV-Cloud VMS is a cloud-based video surveillance and data center solution. Thousands of on-site cameras, alarm devices, motion triggers and AI events can be efficiently monitored from a single cloud-powered platform. With GV-Cloud VMS, you can effortlessly access live streams, review playbacks, and query events from anywhere using a web browser.

GV-Cloud VMS is suitable for businesses of all sizes. The cloud solution is easily scalable to meet the increasing need for more cameras and storage capacity. User and camera permissions can be grouped to align with the structure of a corporation. Overall, the cloud solution streamlines video surveillance while increasing infrastructure flexibility and scalability.



## Key Features

- Cloud-based centralized monitoring of cameras and surveillances systems
- Video recordings stored in the cloud
- Direct-to-cloud camera integration (no NVR / VMS required)
- ONVIF camera support via GV-Cloud Bridge
- Instant status of the host storage, I/O, and cameras
- Event search and playback
- Group-specific user and camera permission settings
- Easy video sharing and archiving
- E-Map to visualize and display camera locations during events
- GV-Cloud mobile app for instant alerts and remote viewing
- AI Search for AI event search by AI event type or people / vehicle attribute

## Specifications

Number of Hosts	Unlimited
Number of Groups	Unlimited
Number of Users	Unlimited
Video Resolution	<ul style="list-style-type: none"> <li>• <b>Live View / Local playback from hosts:</b> up to 12 MP</li> <li>• <b>Cloud Playback:</b> based on sub-stream resolution, up to 4 MP</li> </ul>
Cloud Storage	3 / 7 / 15 / 30 days
Video Codec	<ul style="list-style-type: none"> <li>• <b>Live View:</b> H.265, H.264</li> <li>• <b>Cloud Playback:</b> H.265, H.264</li> </ul>
Events Supported	AI Events (no Counting Events), Camera Events, I/O Events, System Status, System Abnormal, Storage Events, Login Events
Live View	Live view from hosts
Playback	Cloud Playback, Local Playback directly from hosts
Display Division	1 / 4 / 9 / 16
Video Recording	Up to 30 sec/clip
Language	English, Traditional Chinese, Japanese

**Note:** All specifications are subject to change without notice.

## Compatible Browsers

The following browsers are compatible with GV-Cloud VMS.

- Chrome
- Firefox
- Safari
- Microsoft Edge

**Note:** The WS player is not supported by Safari.

## Compatible GeoVision Products

- **GV-VMS** (surveillance software): V18.3.2 + Patch or later; V17.4.7 + Patch or later
- **GV-AI Guard** (surveillance software): coming soon
- **GV-Cloud Bridge** (encoder): firmware V1.03 or later
- **GV-Cloud Cam**: GV-GBL4900, GBL4911, GDR4900, GEB4900, GEBF4911, GVD4910
- **GV-SNVR** (standalone system): to support in the future
- **GV-Recoding Server**: to support in the future

## Licenses

GV-Cloud VMS has the following types of licenses. For details, please contact our sales representatives.

Plan		Basic	Standard	Premium
Price		Free	Licensing by channel	Licensing by channel
Details		Log only – 30 Days	Event Snapshot – 30 Days	Cloud Backup – 3 / 7 / 15 / 30 Days
Features	Live View	V	V	V
	Local Playback	V	V	V
	System Health	V	V	V
	Event Snapshot	-	V	V
	Share Link	-	V	V
	Archive	-	-	V
	Cloud Backup	--	-	By resolution: SD / 720p / 2 MP / 4 MP
	AI Search	AI Event	V	V
People & Vehicle Attributes		-	-	V

### Note:

1. The Standard and Premium plans are priced based on the required number of camera channels.
2. The SD resolution is 640 x 480 or below.
3. **GV-VMS / GV-Cloud Bridge / GV-Cloud Camera (GV-GBL4900 / GBL4911 / GDR4900 / GEB4900 / GEBF4911 / GVD4910)** hosts have the following limits when uploading events onto GV-Cloud:
  - Up to 2 events are supported for each channel per minute.
  - Up to 7,680 events are supported for 64 channels per hour.
  - Up to 184,320 events are supported for 64 channels per day.
4. For more information, see the user's manual.

## Compatible GV-IP Cameras for AI Search

On GV-Cloud VMS, you can enable post-event AI search by AI event types or people/vehicle attributes with the following compatible GV-IP cameras. For more information, see the user's manual.

### 1. Connected via GV-Cloud Bridge (firmware V1.06 or later) / GV-Cloud IP cameras

AI Event	Compatible GV-IP Cameras				
	Connected via GV-Cloud Bridge (firmware V1.06 or later)				Direct-to cloud IP camera
	AI-capable GV-ABL/ADR/AV D/TBL/TDR/TVD /EBD/TFD Series, GV-TBLP5800, BLFC5800, EBDP5800, EBFC5800, PTZ5810-IR, TMS8800 GV-SD4825-IR, SD4834-IR	GV-BX2802 / BX4802, GV-TMEB5800	GV-PBL8800 / PDR8800	GV-RBL5800 / RBL5811, REB5800, RMS32810	GV-GBL4900 / GBL4911, GDR4900, GEB4900, and GVD4910 (firmware V1.02 or later)
PVD Motion	✓	-	✓	✓	-
Intrusion	✓	✓	-	✓	✓
Cross Line	✓	✓	✓	✓	✓
Enter area	✓	✓	✓	✓	✓
Leave area	✓	✓	✓	✓	✓
Loitering	-	-	✓	-	-
<b>People &amp; Vehicle Attributes</b>					
People Attributes	-	-	-	-	✓
Vehicle Attributes	-	-	-	-	✓

## 2. Connected via GV-VMS V18.3.4 or later

AI Event	Compatible GV-IP Cameras			
	AI-capable GV-ABL/ADR/AVD/TBL/TDR /TVD/EBD/TFD Series, GV-TBLP5800, BLFC5800, EBDP5800, EBFC5800, PTZ5810-IR, TMS8800 GV-SD4825-IR, SD4834-IR	GV-BX2802 / BX4802, GV-TMEB5800	GV-PBL8800 / PDR8800	GV-RBL5800 / RBL5811, REB5800, RMS32810
PVD Motion	V	-	V	V
Intrusion	V	V	-	V
Cross Line	V	V	V	V
Enter area	V	V	V	V
Leave area	V	V	V	V
Loitering	-	-	V	-
Smoke/Flame Detection	-	V	-	-