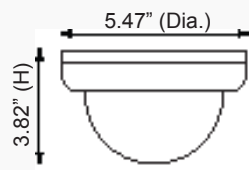


HD-TVI 2MP Intensifier® T Indoor Dome Camera

- CVC6246T** 2.8-12mm auto iris varifocal lens, black housing
CVC6246TW 2.8-12mm auto iris varifocal lens, white housing



Features

- 1/3" Sony Exmor CMOS, 2MP
- Full HD resolution over coax (HD-TVI)
- Amplify existing light with no distance limitations
- No problems caused by objects that reflect or absorb IR light sources
- With presets for different scenarios
- 12VDC / 24VAC dual voltage operation
- Full OSD operation via UTC
- 3 axis lens mount
- Signal distance up to 1600 ft*
- Additional analog output for 960H
- 5 year warranty

Specifications

Image Sensor	1/3" Sony Exmor CMOS, 2MP
Resolution	1980x1080p @ 30fps
Minimum Illumination	0.001 lux
Effective Pixels	1984 (H) x 1105 (V)
Total Pixels	2000 (H) x 1121 (V)
TV System	NTSC
Scanning System	Progressive
S/N Ratio	50dB
Video Output	1.0Vp-p / 75 ohms
Electronic Shutter Speed	Auto / Manual
OSD	Available
Backlight Compensation	BLC / HLC / Off
Day/Night	Color / BW / Auto / Ext
AGC	Level adjustable (0 - 10)
White Balance	ATW / Push / Manual
Sense-up	2x - 32x (adjustable)

Test Monitor Output	CVBS
Intensify	Auto / Off (selectable x2 - x512)
Motion Detection	On / Off (4 programmable zones)
Privacy Masking	On / Off (16 programmable zones)
Speco DNR	Off / Low / Med / High
Sharpness	On / Off (level adjustable)
Mirror	On / Off
Power Supply	12VDC / 24VAC dual voltage operation (power supply not included)
Power Consumption	12VDC, 150mA / 24VAC, 195mA
Operating Temperature	14° F - 122° F
Storage Temperature	-4° F - 140° F
Dimensions	3.82" (H) x 5.47" (Dia.)
Weight	1.54 lbs.

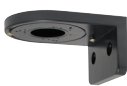
NDAА COMPLIANT

*Products are in compliance with NDAА Section 889 Part B Guidelines

Optional Accessories



DFM1
Tile Ceiling
Flush Mount



CVCWMINDT
Indoor
Wall Mount



PSW4
24VAC
Power Supply



PSW5
12VDC
Power Supply



TVIUTPPT
HD Video
Transceiver with
Pigtail (Balun)



TVIUTP
HD Video
Transceiver

*To preserve signal quality and distance, Speco Technologies recommends using coax with a 100% copper center conductor and at least 95% braided copper shield. Speco Technologies is constantly developing and improving products. We reserve the right to modify product design and specifications without notice and without incurring any obligation. Spec Rev. 2/23/22

